


**BIOMETRIC
IDENTIFICATION OR
VERIFICATION**


Subterminal B-Net 91 05 FP for access control

The B-Net 91 05 FP subterminal with its biometric fingerprint sensor for ID check is ideally suitable for access control solutions. Through its compact and flat design it integrates well into modern architecture. Existing Kaba installations with already enrolled finger templates can be easily extended with this subterminal. Existing cabling will not require modification. Connected to the B-Net 92 50 or B-Net 92 90 access manager, the B-Net 91 05 FP guarantees a legally secure and unique person-based data collection.

Identification

In identification mode, the template management integrated into B-COMM Java handles enrollment of finger templates as well as demand-driven distribution of the reference templates over several locations and company divisions. In this mode it can be used to secure the outer shell of buildings with

template distribution via serial Subpartylite. Since badges are not used, this mode is also suited in areas such as the food industry, where cards and key tags are often forbidden, or in areas with a high fluctuation of personnel, in order to reduce the time and costs for card management.

Verification

In verification mode, reference templates are copied to the badges by B-Net 91 07 desktop reader. These badges are then carried by the users. A verification check of two characteristics (badge and finger) increases security, guarantees maximum data security and allows a virtually unlimited number of users. Places of use are access points with increased security requirements, in countries where a central storage of data is not permitted, and generally in addition to already existing badge-based systems.

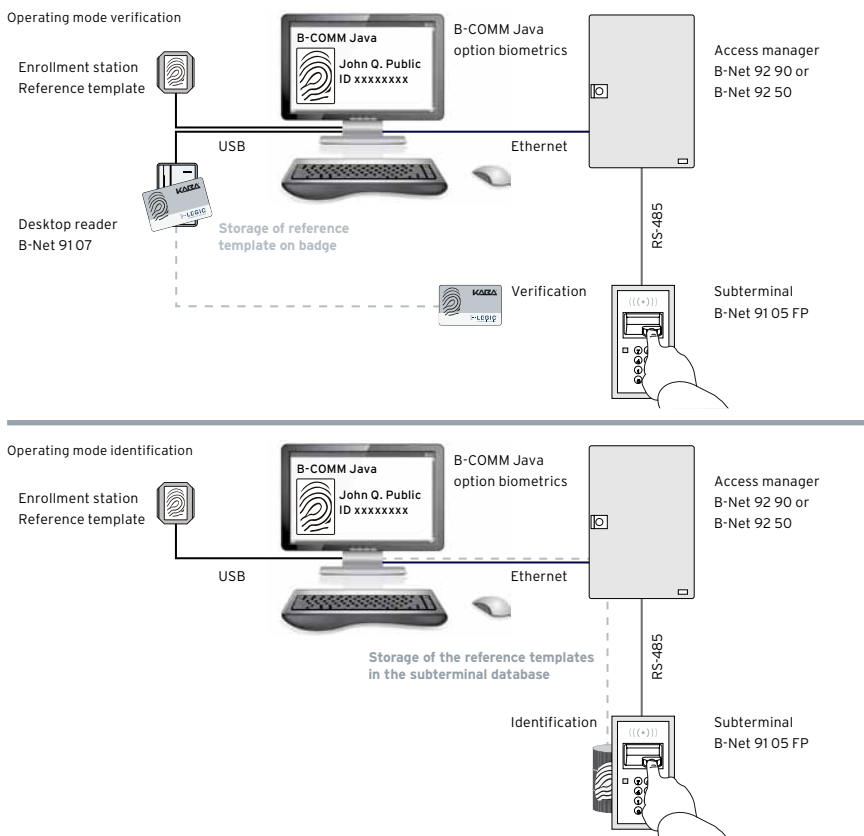
Your benefits at a glance

- > Biometric identification or verification (finger or ID comparison) and optional PIN code entry
- > Integrated LEGIC® reader (prime/advant) for biometric verification or alternative ID entry (ID entry also via keypad)
- > High-quality biometric sensor guarantees quick and reliable detection
- > Automatic activation by proximity sensor for convenient operation
- > Easy system integration without modification of existing cabling through standard RS-485 interface and 24 V power supply
- > Meets protection class IP54 and with the protective hood is suitable for outdoor installation

Made in Germany
developed and produced
in Germany

Characteristics of the B-Net 91 05 FP subterminal

- > **Investment protection:** Compatibility with the B-Net and Bedanet series makes it possible for you to run mixed operations with Kaba systems already installed and any extensions.
- > **Operating modes:** Biometric identification or verification (finger or ID comparison) and optional PIN code entry.
- > **Sensor:** The fingerprint sensor used is the proven CBM module by MORPHO with a large scan window and excellent identification algorithm, which guarantees quick and dependable identification. An adjustable FAR (False Acceptance Rate) of up to 10^{-8} guarantees high security. The sensor is dust and waterproof and resistant to electrostatic discharge (ESD).
- > **Versions:** In the standard version, 500 persons can be stored in the reader; up to 5,000 persons are possible as an option. To meet higher requirements a FIPS / FBI certified version is available. An optional, integrated LEGIC (prime/advant) reader guarantees maximum flexibility for biometric verification or alternative ID entry.
- > **User interface:** The operating and authorization statuses are signaled to the user via a tricolor light-emitting diode and a buzzer. The automatic activation of the fingerprint sensor by a proximity sensor ensures easy and time-saving operation.
- > **Keypad:** The subterminal is equipped with a robust membrane keypad with tactile response so that people with less defined biometric features can also enter their ID/personnel number for identification. The keypad also offers the option to enter a PIN code to increase security level, if required.



Technical features

Power supply

- > 24 V AC/DC via access manager or external power supply unit
- > Current consumption: maximum 150 mA with active sensor

Interfaces

- > RS-485: Serial subpartyline to connect to the B-Net 92 90 and B-Net 92 50 access managers.
- > I/Os: 2 digital inputs, e.g. for door monitoring, 1 relay output (30 V AC/DC), vandal contact for detecting and reporting tampering attempts.

Environment

- > Ambient temperature: -15°C to +50°C, no direct sunlight
- > Relative humidity: 10-95% non-condensing
- > Protection class according to IEC 60529: IP54

Housing

- > Compact plastic housing for flush mounting (55 mm twin box according to DIN 49073-1)
- > Optional surface mounting or spacer frame
- > Protection hood and free-standing post on request

Dimensions (Width x Height x Depth)

- > 83 x 150 x 15 mm (flush mounting)
- > 83 x 150 x 56 mm (surface mounting)

Detailed dimensional drawings are available for downloading on our homepage.

